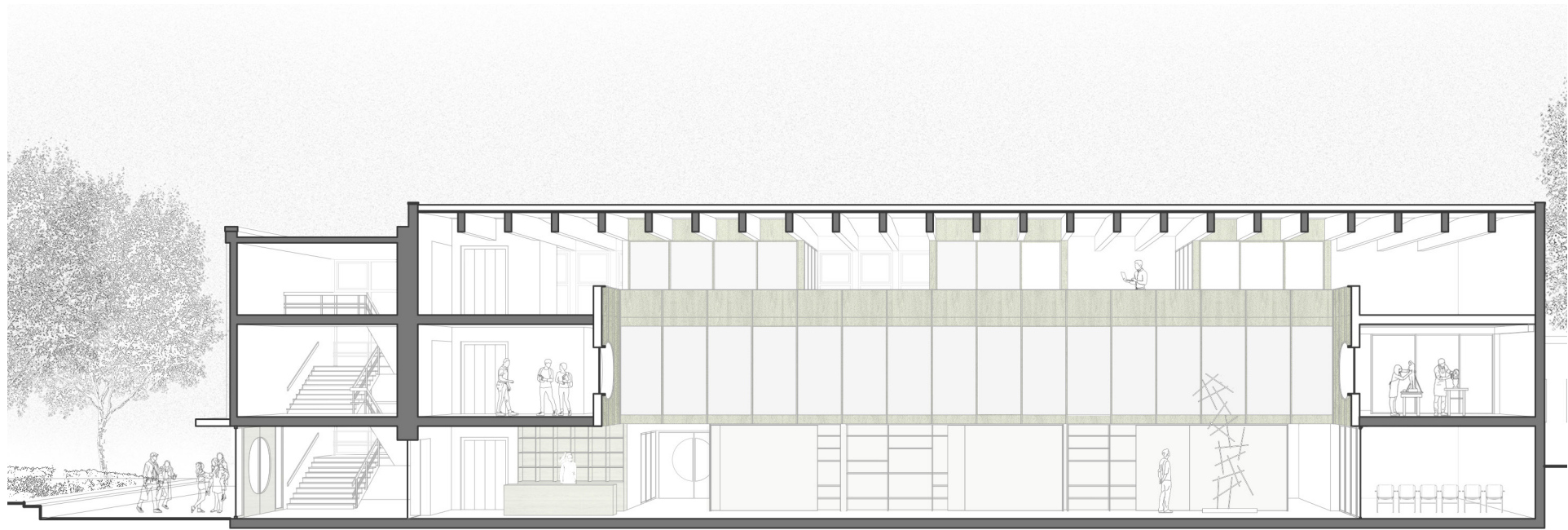
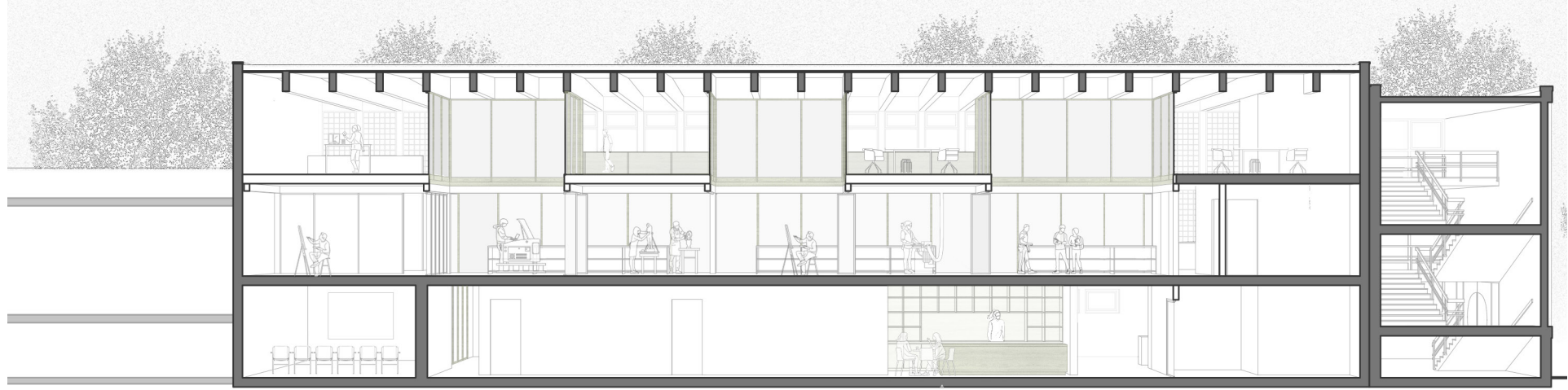




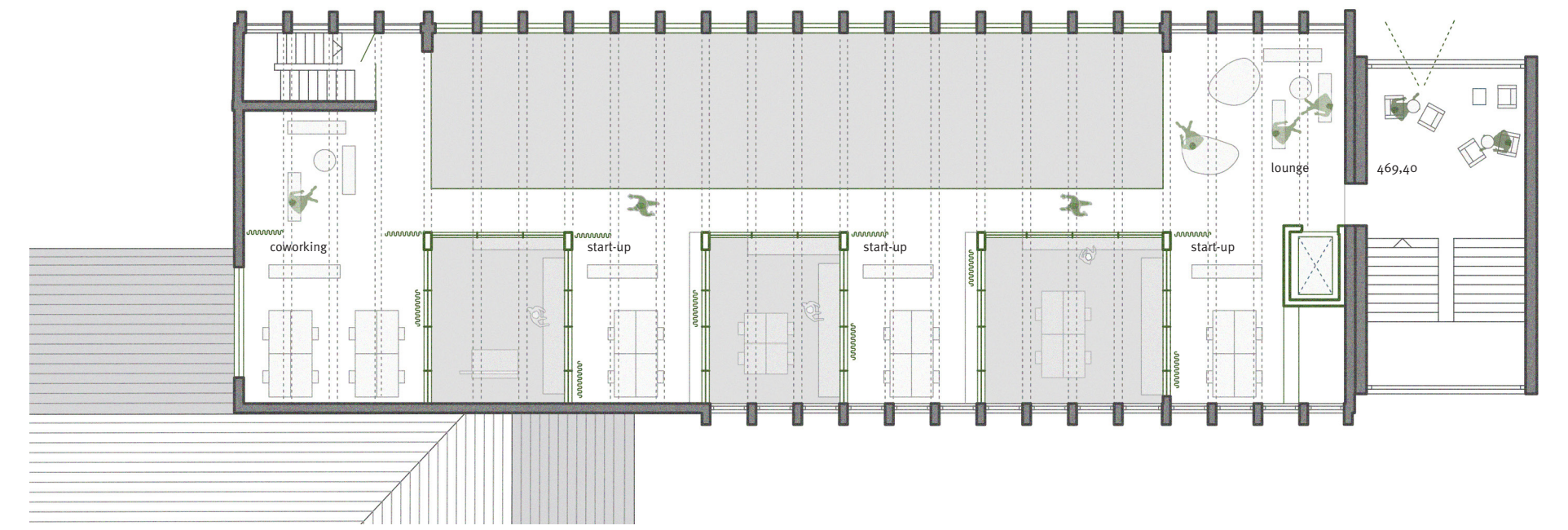
Multifunctional workshops hall - ground floor



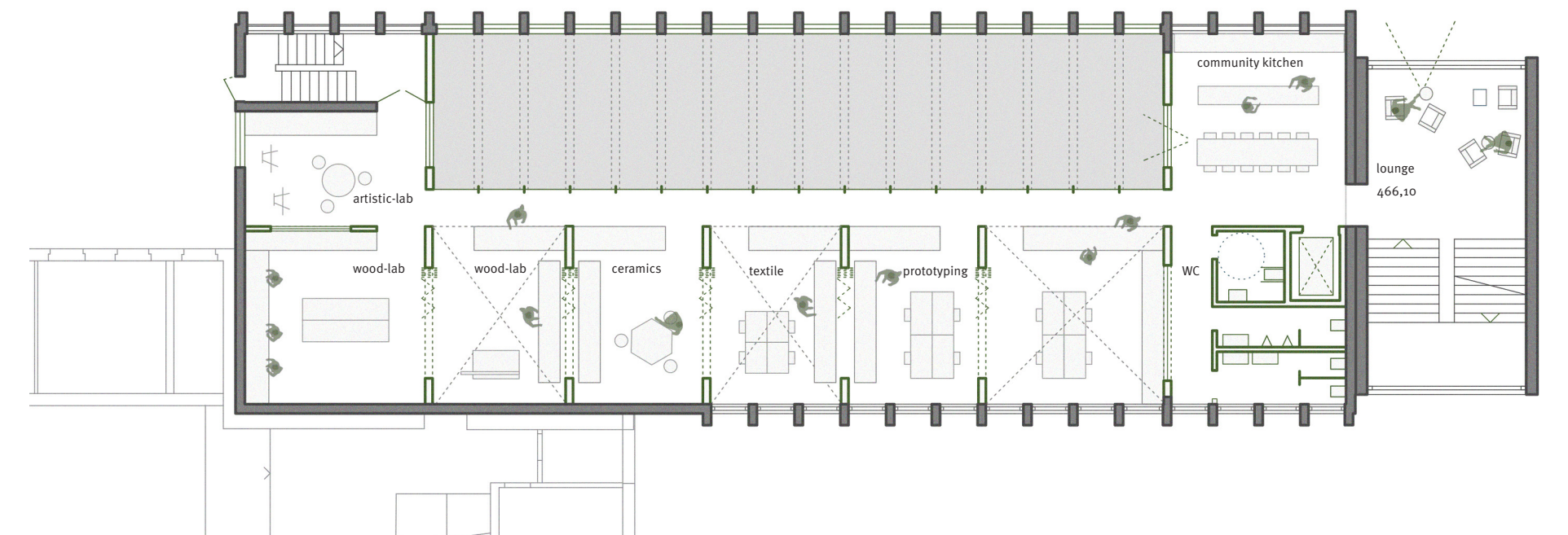
Longitudinal section - hall M1:200



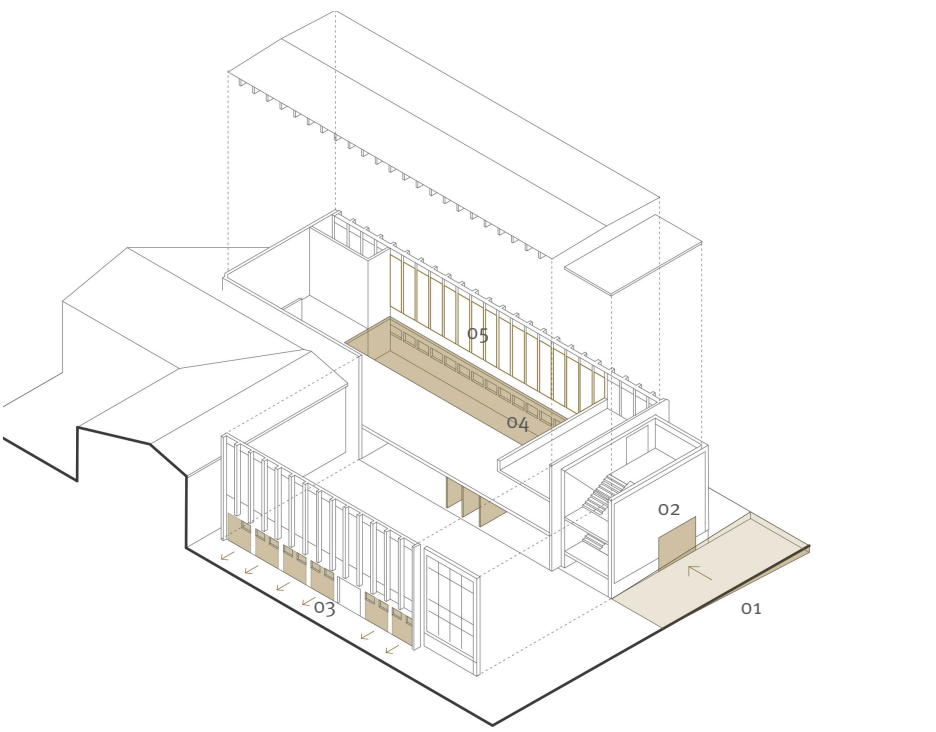
Longitudinal section - workshops M1:200



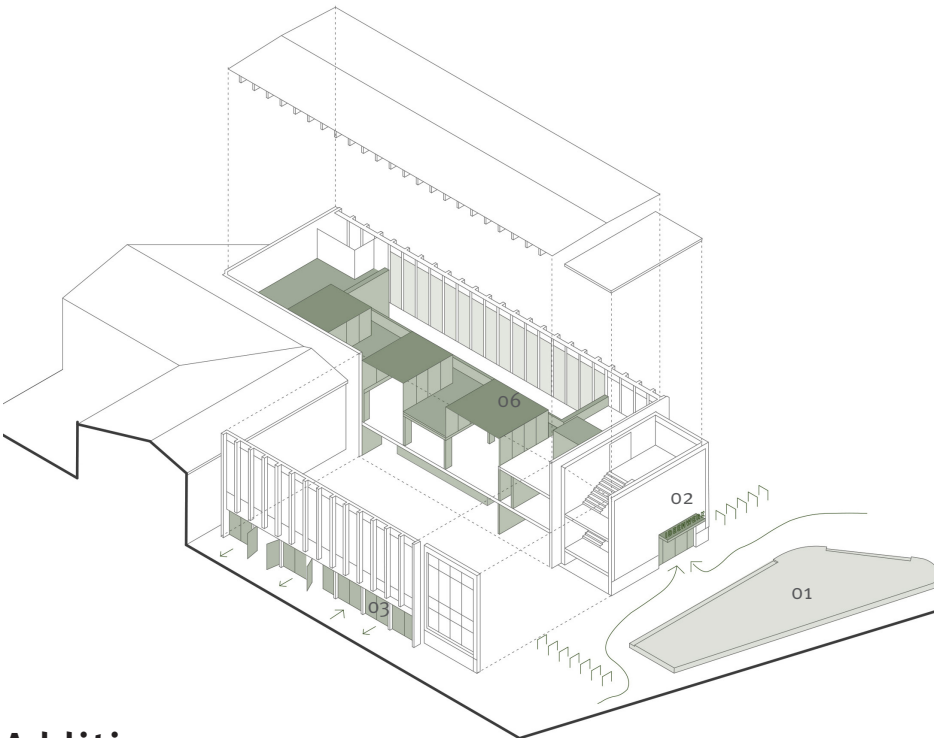
Second floor - workplaces M1:200



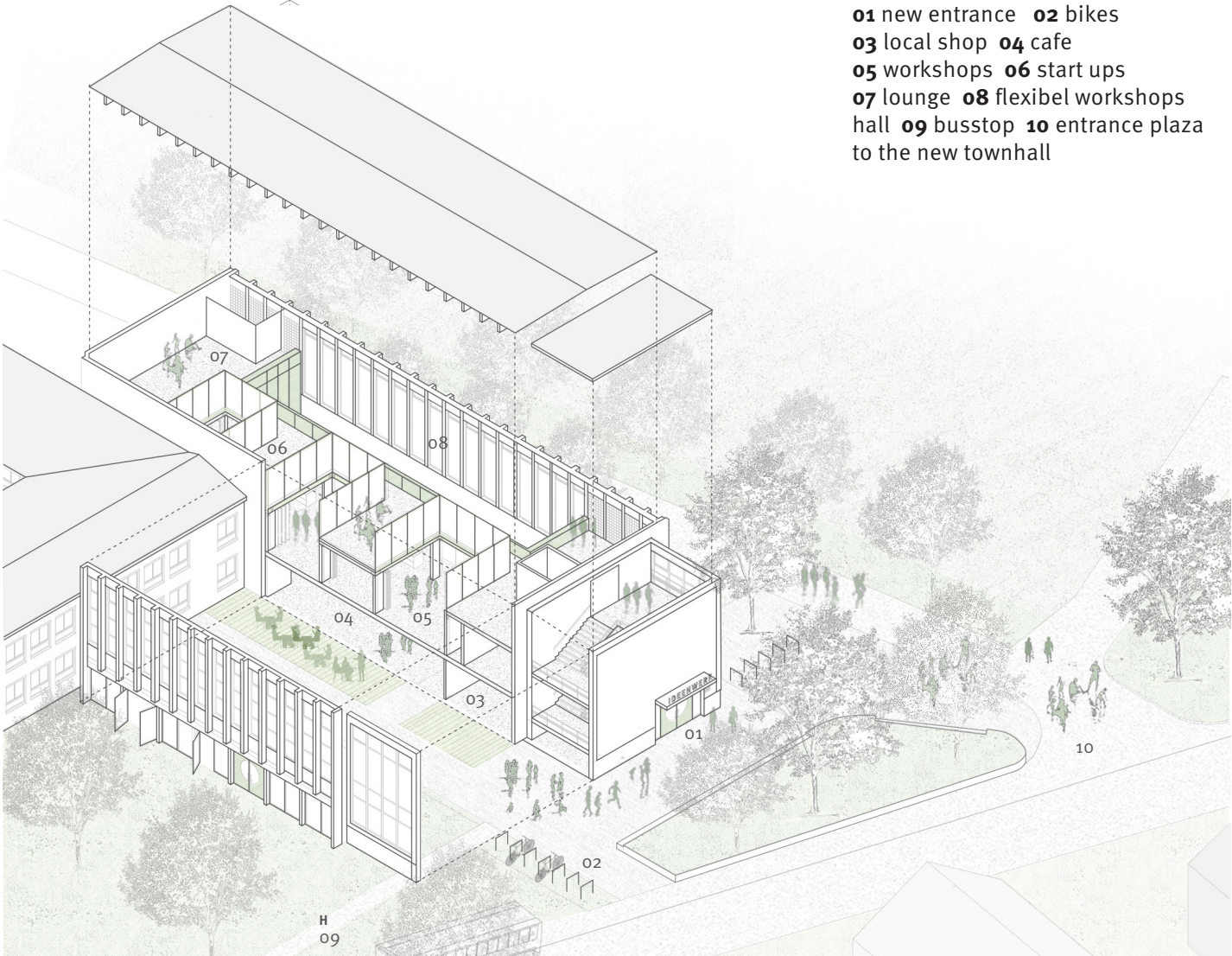
First floor - workshop M1:200



Subtraction



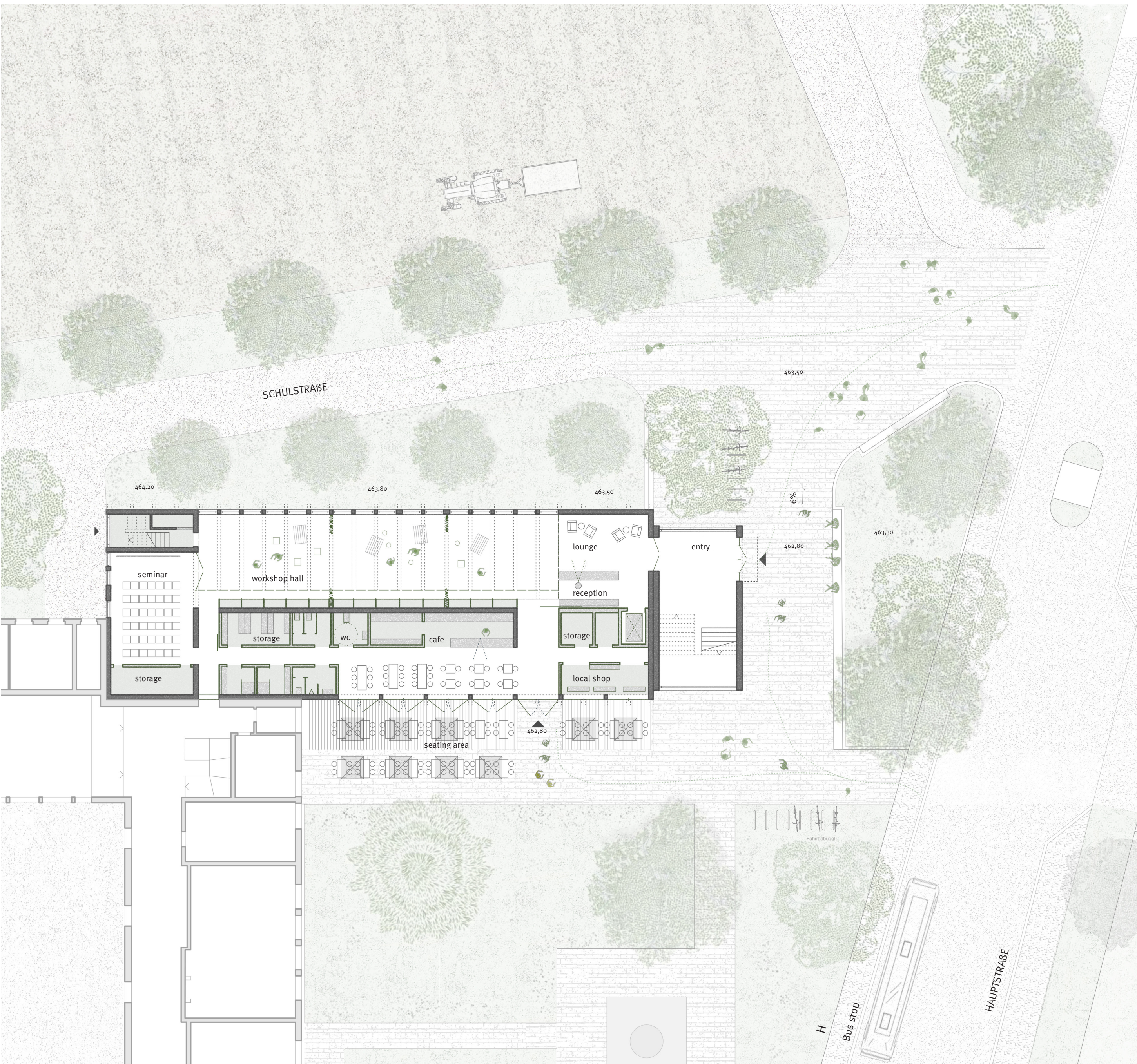
Addition



Public space and function

- 01** topographical adjustment of the terrain to enable barrier-free, level access across the site  
**Redesign of the entrance forecourt** featuring integrated seating
- 02** strategic facade opening towards the east to establish a clear urban frontage and strengthen the connection to the newly developed entrance of the village centre  
**Redefined entrance situation** characterized by a striking and contemporary architectural language
- 03** Opening the facade to the south to align the cafe spatially and functionally with the adjacent southern park.  
**Insertion of new window elements**
- 04** Selective removal of the existing ceiling structure in the northern part of the building to create a workshop hall wich is directly connected to the entrance and the outside of the building  
**Formation of a vertically open, multifunctional workshop hall** spanning the entire building height
- 05** Partly Removal of glass blocks in the facade of the workshop hall area to improve natural lighting and visual connection to the new village center. The glass blocks will be reused later inside the building, e.g., as interior walls or partition elements  
**Insertion of new window elements**
- 06** Insertion of a new lightweight timber structure to subdivide workshop and office areas. Formation of a secondary envelope layer for thermal protection.

- 01** new entrance **02** bikes  
**03** local shop **04** cafe  
**05** workshops **06** start ups  
**07** lounge **08** flexibel workshops hall **09** busstop **10** entrance plaza to the new townhall



Ground floor - workshops hall M 1:200